



PERMISSION REPORTER[®] v4.0

Quickstart Guide

NETsec
September 2015

1	Introduction	3
2	Requirements	4
2.1	Recommendations	4
2.2	Minimum System Requirements	4
2.3	Database Requirements.....	4
2.4	Service Account Requirements:	4
2.5	GUI Account Requirements	5
3	Installation & Upgrade	6
4	First Start	7
4.1	Service Account.....	7
4.2	LocalDB 2012.....	7
4.3	Global Settings.....	8
4.3.1	Company Settings	8
4.3.2	Database Settings	9
4.3.3	Notification Settings.....	11
4.3.4	Summary	11
5	License	13
6	Creating Of Profiles	14
7	View Analyses Results	17
7.1	File System Point of View.....	18
7.2	Active Directory Point of View	18
7.3	PDF Reports.....	19

1 Introduction

By using NETsec Permission Reporter you can gather permissions of security principals on objects of the file system as well as shared folders and saves them in a SQL database. The data determined by Permission Reporter can be used to document the assigned permissions or - if the data have been generated at different times- to point out or document the changes that were implemented.

With the following document we would like to help you to get started with NETsec Permission Reporter.

Should you ever face any problems with Netsec Permission Reporter, please contact support@netsec.de. Our support team will gladly help you.

2 Requirements

2.1 Recommendations

We suggest to install NETsec Permission Reporter on a separate (virtual) machine.

Moreover we recommend to use a resolution of 1920 x 1080p to ensure a pleasant work with the user interface.

2.2 Minimum System Requirements

operating system: Windows Server 2008 64bit / Windows Vista 64bit

main memory: 4 GB

free memory space: 500 MB

.NET Framework: 4.5

CPU: x64

2.3 Database Requirements

Microsoft SQL:

- Server 2005 or later
- LocalDB 2012 (a standard instance called v11.0 will be created after the LocalDB has been installed. Please make sure that this instance available because it is needed in case you use the LocalDB option in the data storage section)

LocalDB instances and their content depend on the user who is currently logged in as well as the user of the service. Please note that only the user of the service will be able to see the analysis results. This is why the LocalDB should only be used for test purposes.

2.4 Service Account Requirements:

On the Machine the Service is Installed On:

- member of the local administrators group
(no predefined account)
- logon as a Service-Privilege

On the Fileserver:

- member of the local administrators group

Database Rights:

- write permissions
- read permissions
- modify data permissions

2.5 GUI Account Requirements

The GUI account is the account that runs the application.

On the Local Machine:

- member of the local administrators group
(not necessarily the machine that should be analysed)

At the Point of Time a New Target Database is Created:

- permission to create databases in the server instance

After a Target Database Has Been Created:

- general read permission in the target databases of the analyses

Particularity when using a LocalDB:

- The GUI-user has to correspond to the user of the service account.
The reason for this is a contextual use of the database (see above).

3 Installation & Upgrade

1. Log in with the GUI account
2. Starten der MSI-Datei (PermissionReporterSetup.4.*.msi)

Should you already have installed a prior version of NETsec Permission Reporter, please make sure that NETsec Permission Reporter Service is stopped during the whole update.

Attention: this event also stops running or pending analyses of NETsec Permission Reporter. Please ensure that no analyses are running.

4 First Start

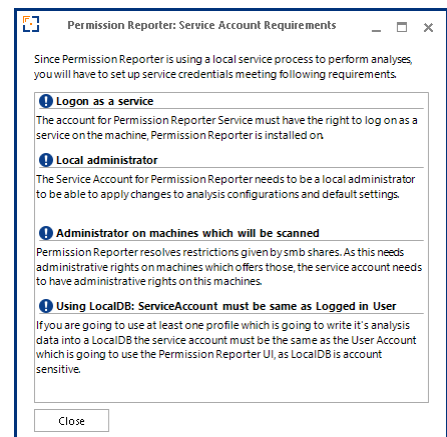
When you start Permission Reporter for the first time, you will find that the program will start one-off checks and make recommendations.

In addition to this you can select standard settings and, if needed, install Microsoft LocalDB 2012.

4.1 Service Account

NETsec Permission Reporter will inform you that the service is logged in as the local system (.\\LocalSystem) when it is started for the first time.

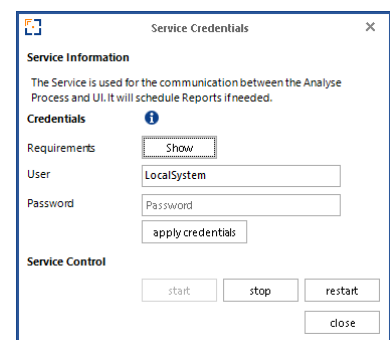
As described in 2.4 (service account requirements) it is recommendable to use a service account for NETsec Permission Reporter. For this reason the credentials have to be changed when you use NETsec Permission Reporter for the first time.



They should correspond to the listed requirements of a Service Account of NETsec Permission Reporter. After you took cognizance of the requirements you will see a dialogue where you are asked to enter valid credentials.

Please enter the user name by sticking the following format: domain\\user or user@domain.

After you clicked on "apply credentials" you will see a success message which you can close afterwards. The service will be restarted after the credentials have been changed to run logged in as the applied service account.



4.2 LocalDB 2012

When you start the program for the first time, NETsec Permission Reporter will check the system for an installed version of Microsoft SQL-Express 2012 LocalDB.

If no installed version has been found, NETsec Permission Reporter will offer you to install you a version of of Microsoft SQL-Express 2012 LocalDB.

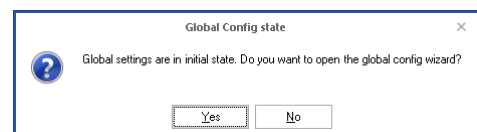
This installation is recommended for test scenarios in case no SQL-Server for analysis results is available.

If you wish to install LocalDB 2012, an installation dialogue will open.

4.3 Global Settings

Permission Reporter offers global settings, which contain settings such as company data or the durability of Logfiles. These settings are valid for the whole program. Moreover global settings give you the possibility to define default settings for profiles. A profile always includes exactly one analysis definition that contains all settings which are needed to perform an analysis.

Since you are starting NETsec Permission Reporter for the first time, we recommend you to click "yes" and open the global config wizard to select the global settings.

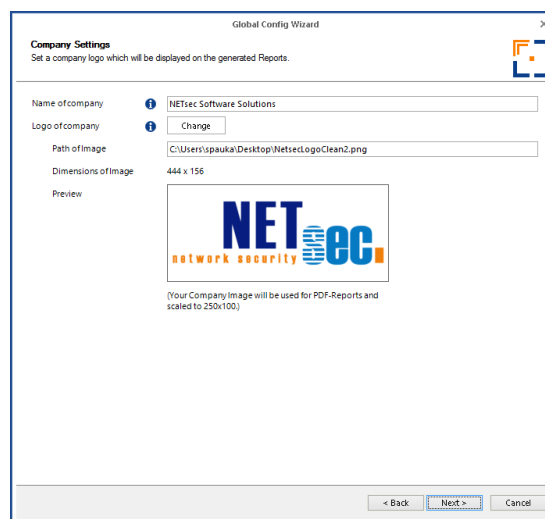


The "Global Config Wizard" supports you with the configuration of the standard settings. The single settings are described below:

4.3.1 Company Settings

At the first page of the wizard you can add your company name as well as your company logo, which will occur in your reports later on.

These specifications are optional and not obligatory.

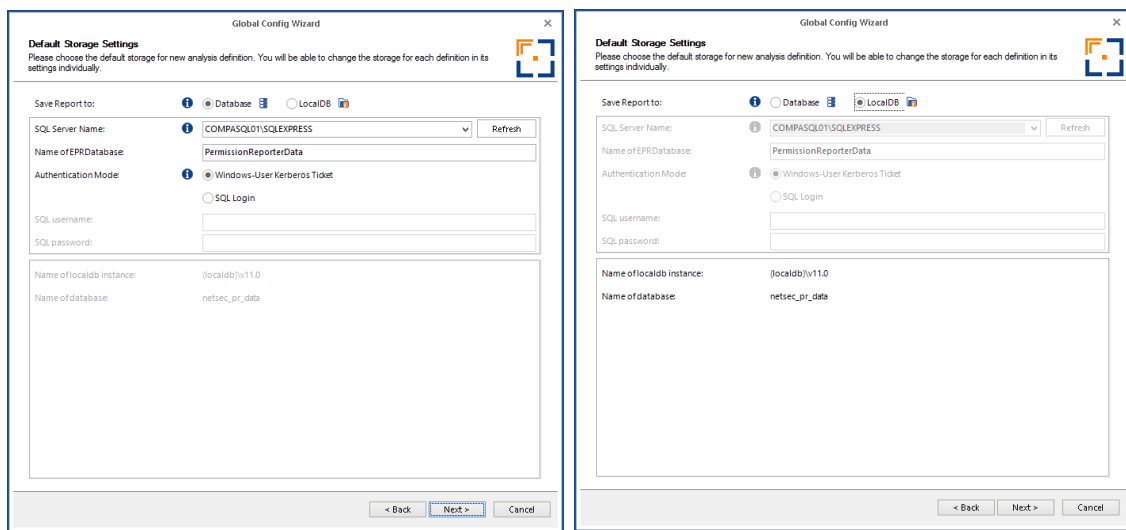


4.3.2 Database Settings

At the page of the "Default Storage Settings" you can chose standard settings that should be applied for new profiles. Here you can select a SQL-Server as well as a database.

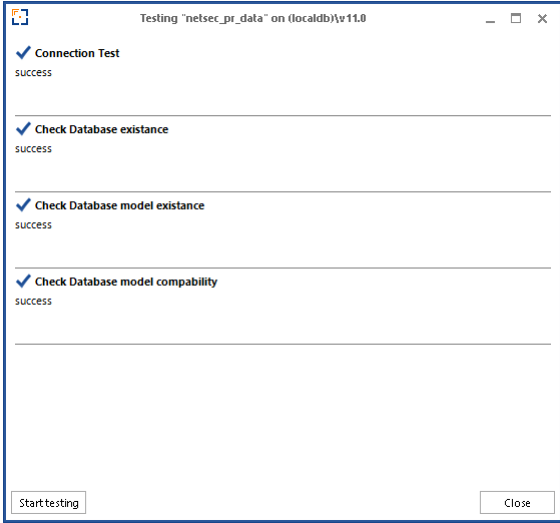
A selected database can only be used for NETsec Permission Reporter if it

- was created by Permission Reporter in a previous session.
- does not exist and can be created by NETsec Permission Reporter.

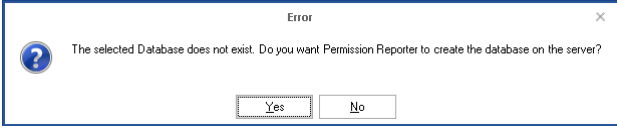


Should you decide to use the LocalDB, please note that this is only possible when the user of the UI corresponds to the user of the service account (2.5 GUI account requirements).

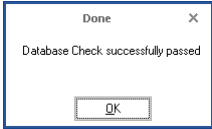
After a server and a database have been selected the database will be validated.



Should no database exist, NETsec Permission Reporter will offer you to create it.

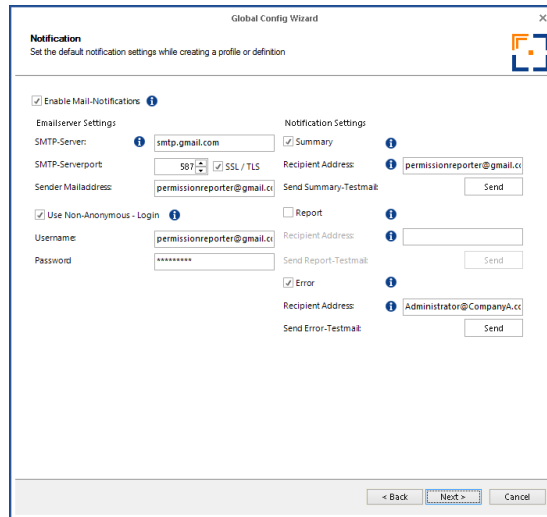


After the database has been created, it will be validated again.



4.3.3 Notification Settings

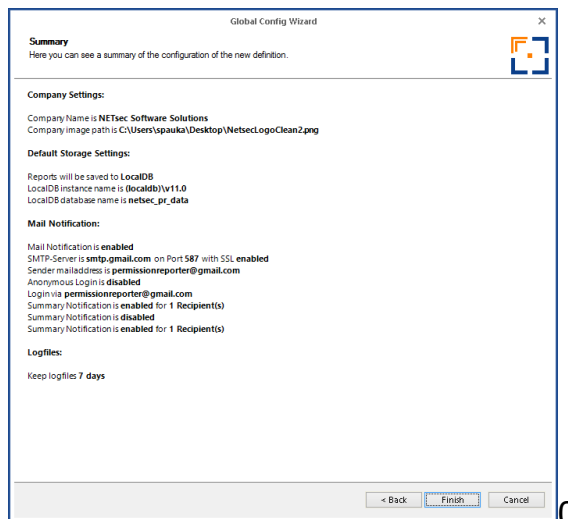
NETsec Permission Reporter can send you notifications with statistics of a performed analysis by e-mail. Therefore NETsec Permission Reporter needs data about the SMTP server in use and possibly the login data for this server.



You can check the functionality of the e-mail transmission by using the testmail buttons.

4.3.4 Summary

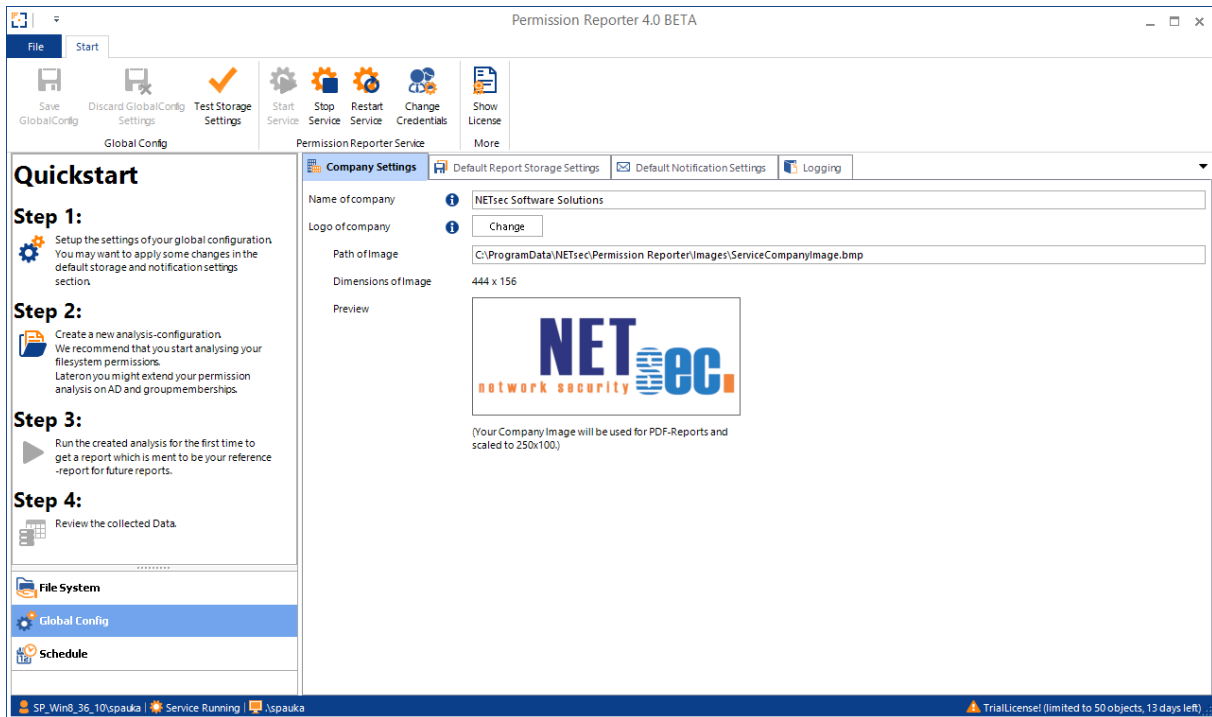
Finally an overview of the settings you chose will be shown.



0

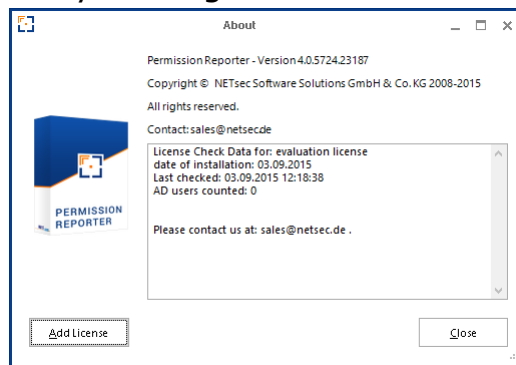
After you have closed the wizard you will see the graphic interface of the software.

Now you are in the Global Settings, where you find a Quick Start Menu which facilitates your first steps in NETsec Permission Reporter.



5 License

If you own a licence for Netsec Permission Reporter you can import it with the following dialogue by clicking on "Show Licence" and "Add Licence".



Should you use NETsec Permission Reporter without a licence for test purposes, please note that an analysis is restricted to 50 objects of the file system.

6 Creating Of Profiles

Which path you would like to examine and which file system objects shall be analysed is saved in profiles.

By clicking on the symbol of "Step 2" of the Qickstart element, you will reach the wizard for such a profile.

At the first page you can enter a name and a description for the profile.


At the following page please chose a folder of the file system or a Shared Folder as the base object for the analysis.


Besides the pure selection of a path you can decide here up to which degree of branching subfolders and files shall be analysed.


Please note that the choice you made for this profile cannot be changed after it has been created.


Should you decide to analyse files, please keep in mind that the execution time of the analysis will be longer since normally a lot more objects of a file system will have to be analysed in this case.

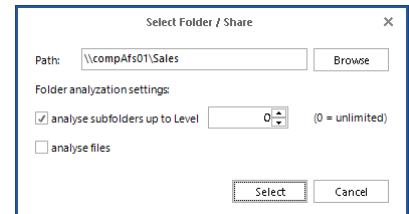
Quickstart

Step 1:
 Setup the settings of your global configuration. You may want to apply some changes in the default storage and notification settings section.

Step 2:
 Create a new analysis-configuration. We recommend that you start analysing your filesystem permissions. Lateron you might extend your permission analysis on AD and groupmemberships.

Step 3:
 Run the created analysis for the first time to get a report which is ment to be your reference-report for future reports.

Step 4:
 Review the collected Data.



Select Folder / Share

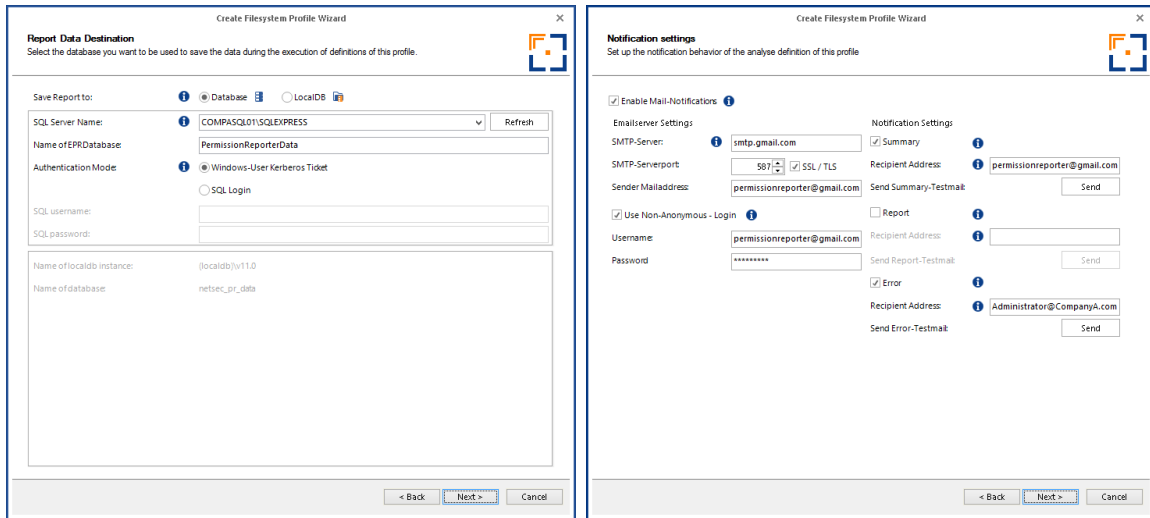
Path:

Folder analyzation settings:

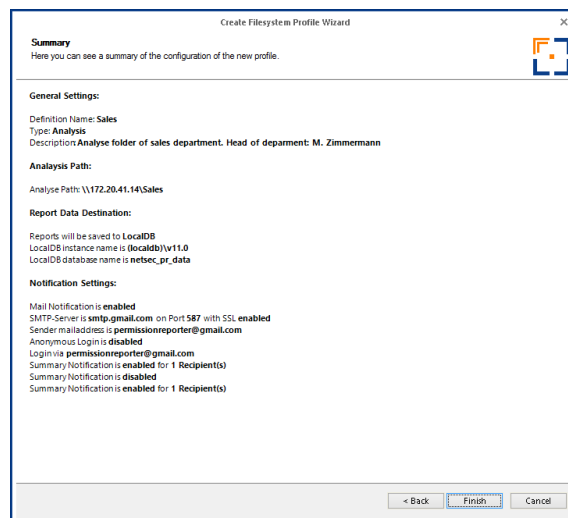
analyse subfolders up to Level (0 = unlimited)

analyse files

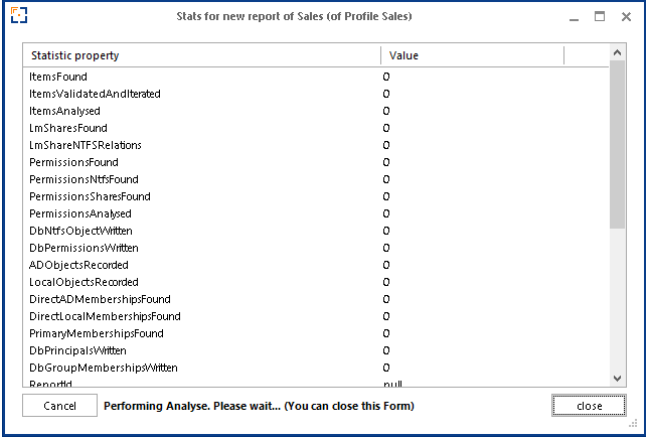
After that you can make adjustments in regard to the database and notifications.



Now you will be shown a summary screen with the settings you just chose.

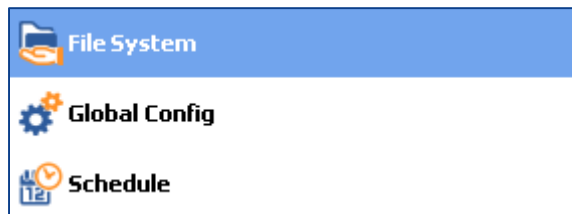


By clicking on the picture "Step 3" in the Quickstart element, an analysis of the profile profile that was just created will start and you have the possibility to follow the status of the current analysis in the respective dialogue or you can take this opportunity to familiarize yourself with the interface of NETsec Permission Reporter.

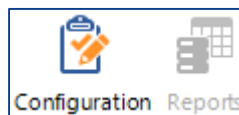


7 View Analyses Results

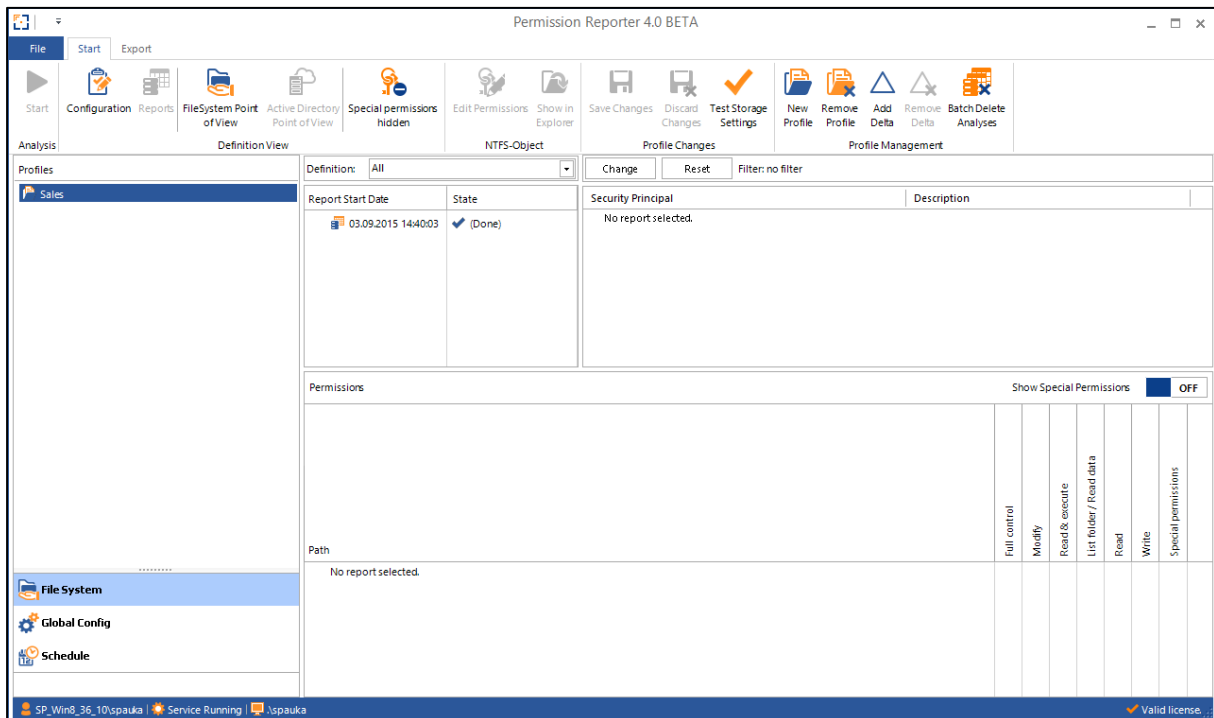
To view results of an analysis (so-called "reports"), please select "File System" in the menu which you will find on the bottom left of the user interface. A list of all available profiles will be shown above in the navigation area.



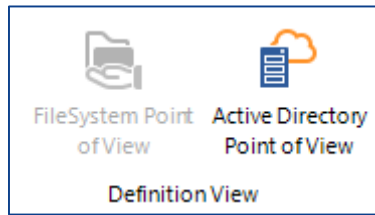
In the upper part you get the opportunity to go from "Configuration" to "Reports". You will find them under the section "Start". Once this change has been made, the active selection will be grayed out.



Next to the list of all profiles, a list with all analyses will occur.



When looking at an analysis you can choose between two points of view.

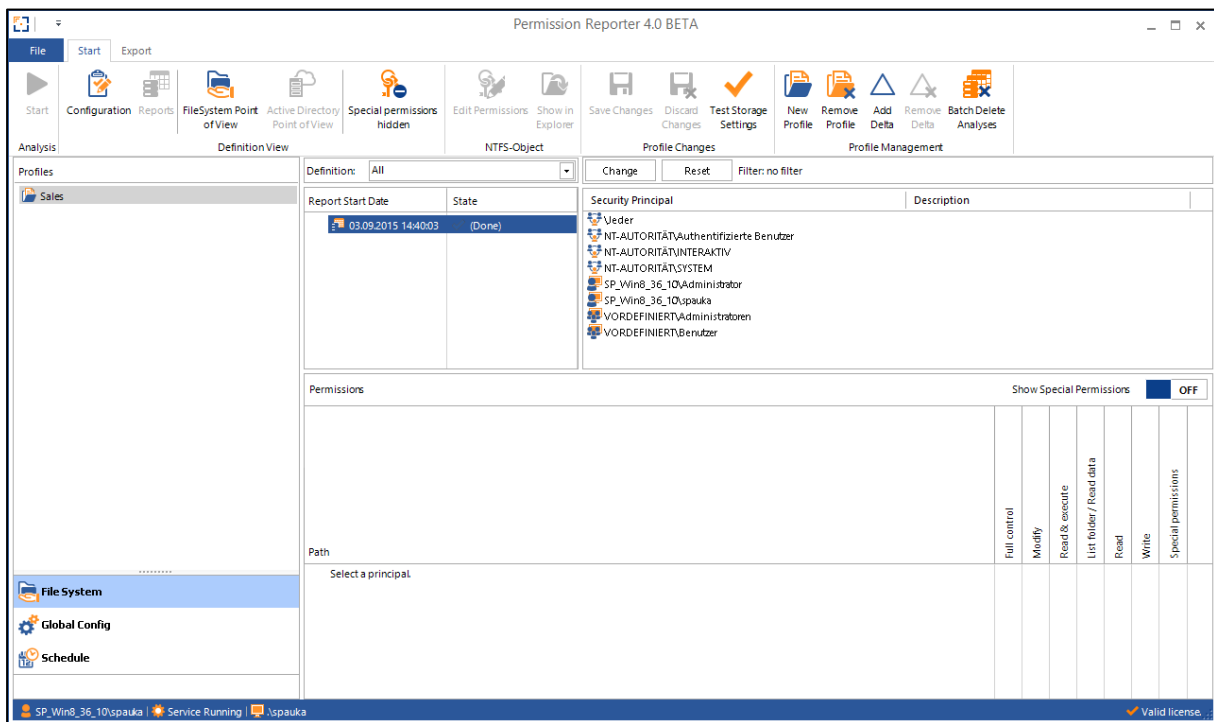


7.1 File System Point of View

This point of view shows the analysis of all the objects NETsec Permission Reporter found in the file system and shows you the permissions of any selected object in form of a DACL (Discretionary Access Control List).

7.2 Active Directory Point of View

This point of view firstly shows you the security principals NETsec Permission Reporter found during the analysis and thereupon the file system objects with permissions granted for a selected security principal.



7.3 PDF Reports

In accordance with the selection of objects of the file system and/or security principals, NETsec Permission Reporter also offers the creation of various reports in PDF format.

