



TEST DATA TOOL V2.0

Manual

NETsec

September 2019

| | | |
|----------|--|-----------|
| 1 | Introduction | 3 |
| 2 | What the tool looks like | 3 |
| 3 | What does the tool provide you with?..... | 4 |
| 3.1 | Organization Units | 4 |
| 3.2 | Contacts and Mail Enabled Contacts | 5 |
| 3.3 | User, Mail Enabled User and Mailbox User | 6 |
| 3.4 | Groups and Mail Enabled Groups | 7 |
| 4 | Behind the scenes..... | 8 |
| 4.1 | Random values..... | 8 |
| 4.2 | Log files | 8 |
| 4.3 | Settings | 9 |
| 5 | Prerequisites | 10 |
| 6 | Download | 10 |
| 7 | Support..... | 10 |
| | Copyright & License | 11 |
| 8 | Comments and Feedback | 11 |

1 Introduction

A lot of administrators are looking for scripts to create test accounts in bulk. NETsec now offers a freeware tool which creates users, contacts and groups for your test environment.

You can determine which attributes are filled in automatically and whether the objects are mail-enabled.

For the new objects, an OU substructure can be created to spread the objects among them.

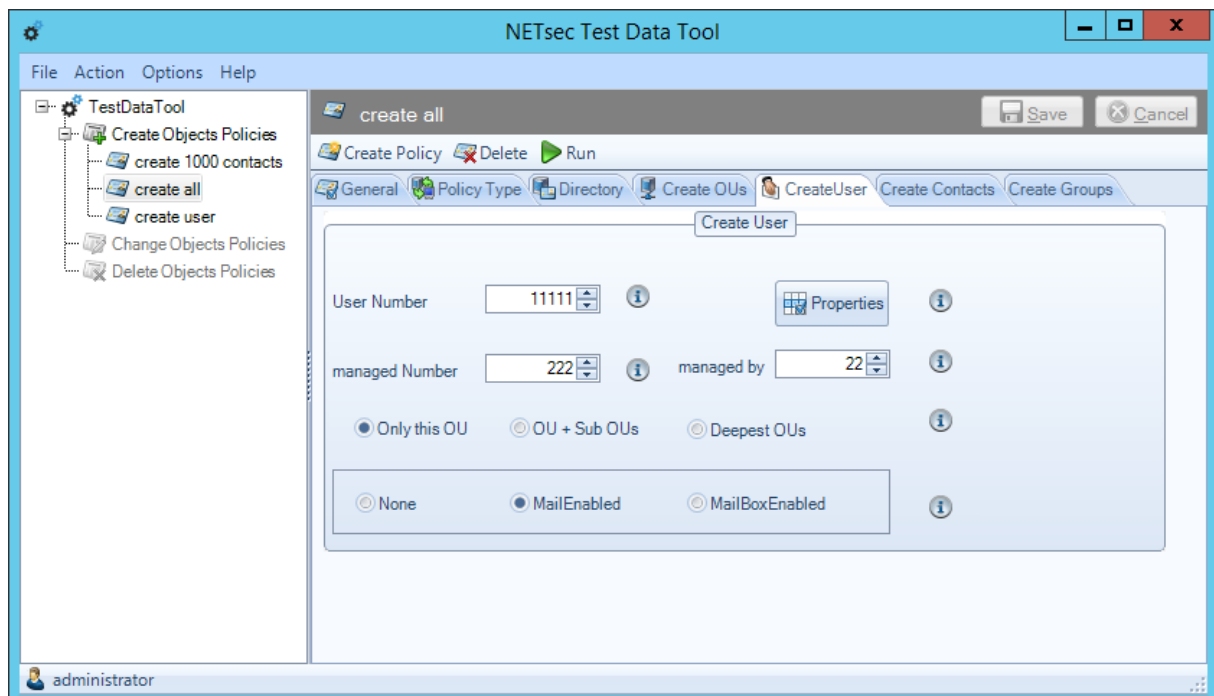
For user objects mailboxes can be created additionally.

Metadata for creating the objects are already included, but can also be adapted at any time.

The tool works fine with Active Directory and Exchange 2007sp1 and higher and makes it easy to create a large number of Active Directory objects.

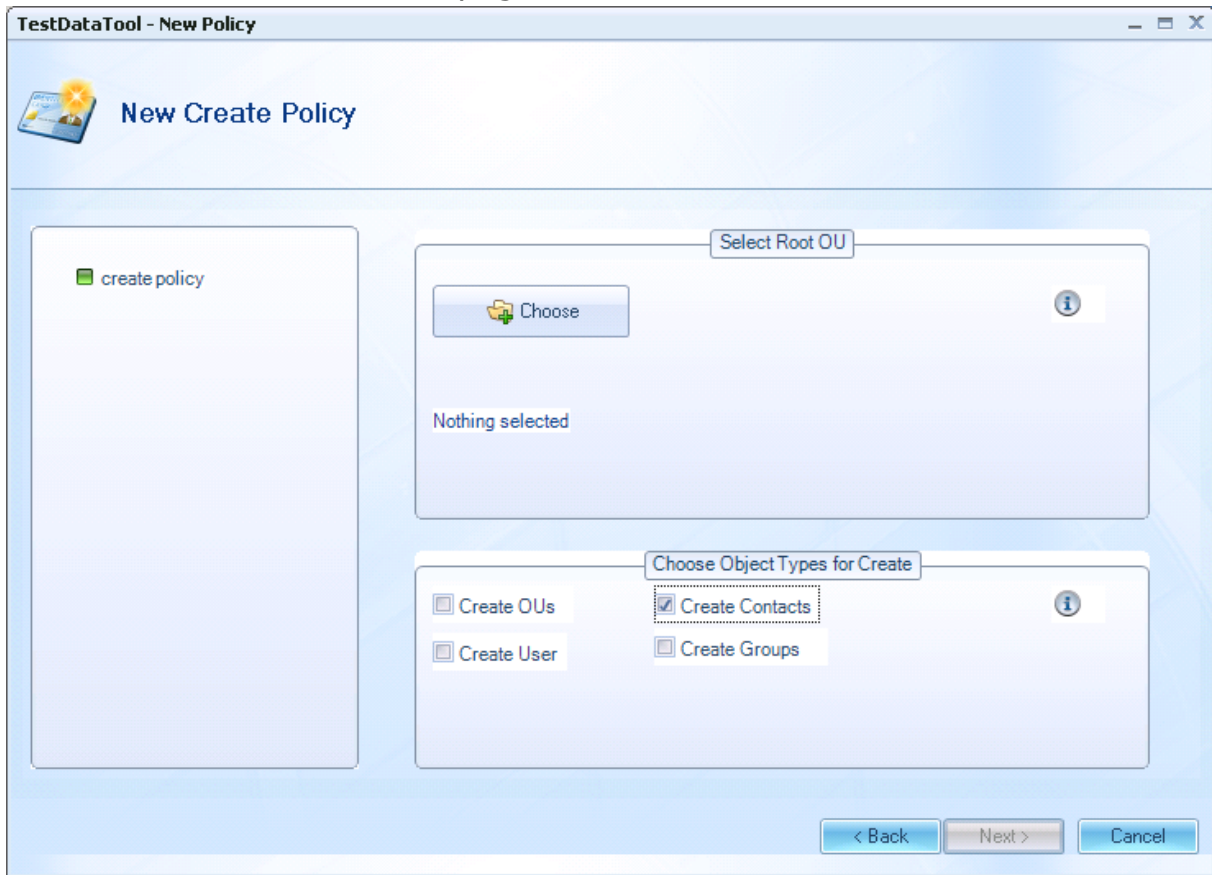
Great for Active Directory and Exchange test lab needs!

2 What the tool looks like



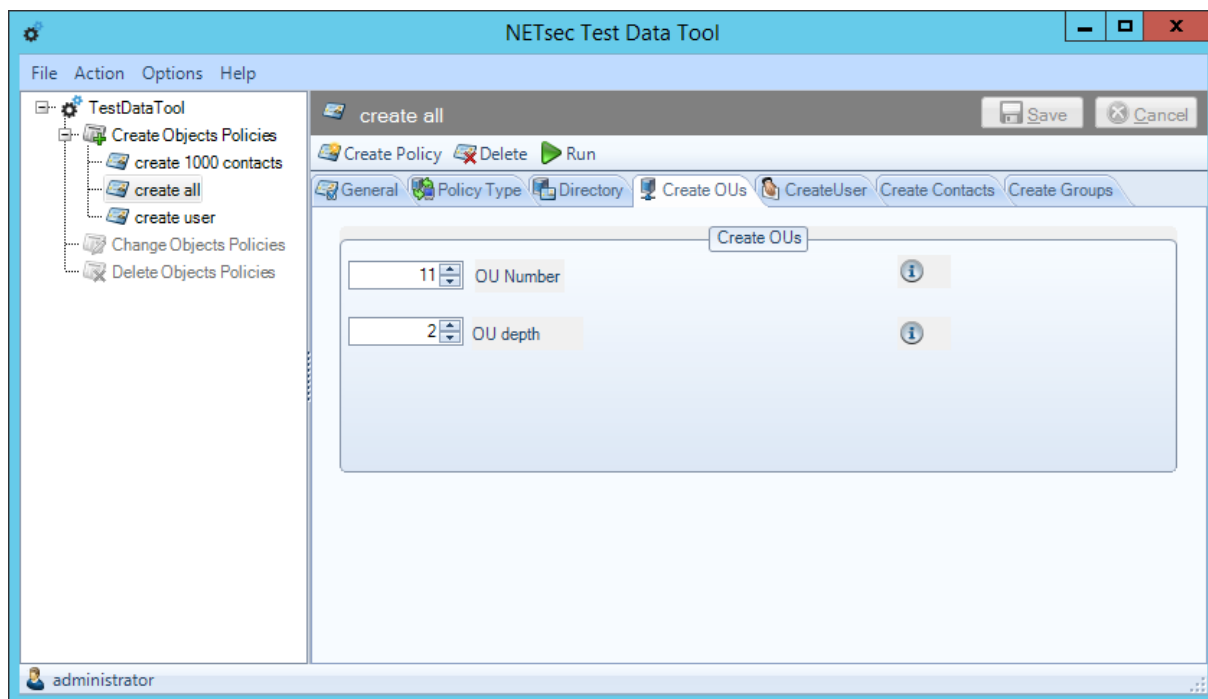
3 What does the tool provide you with?

During policy creation, you can select different types of objects for creation. The settings for the chosen object types are explained more detailed on the next wizard pages.



3.1 Organization Units

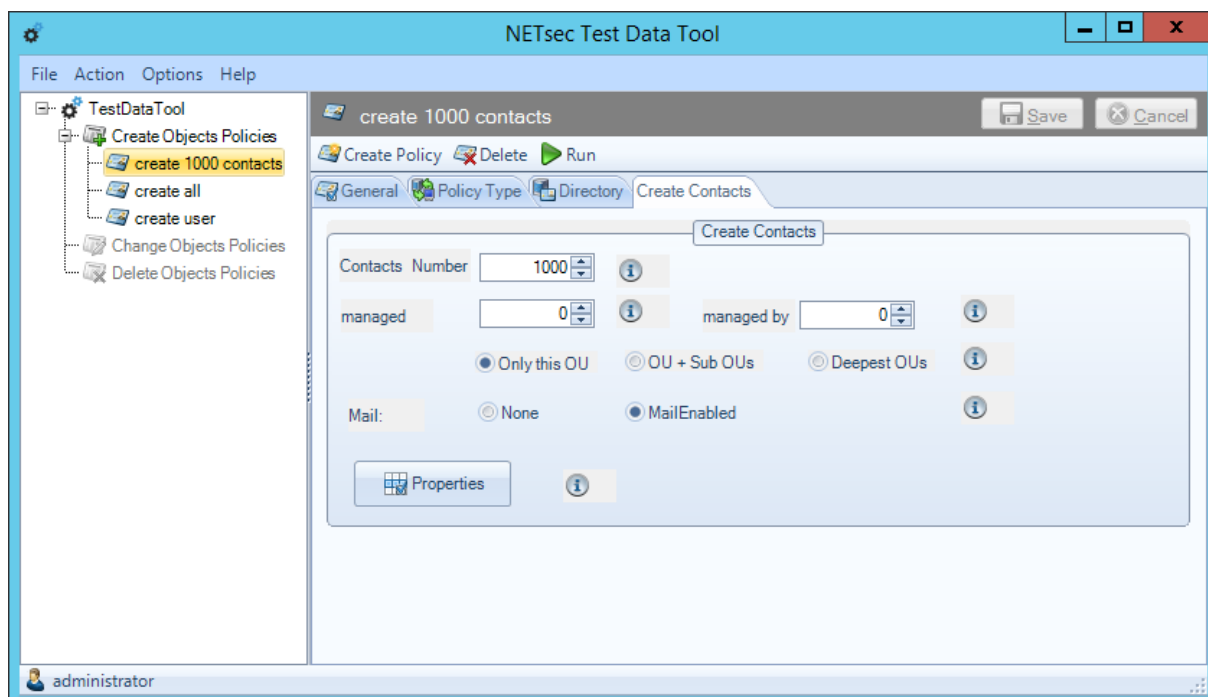
An Organizational Unit substructure can be optionally created to spread new objects among them.



3.2 Contacts and Mail Enabled Contacts

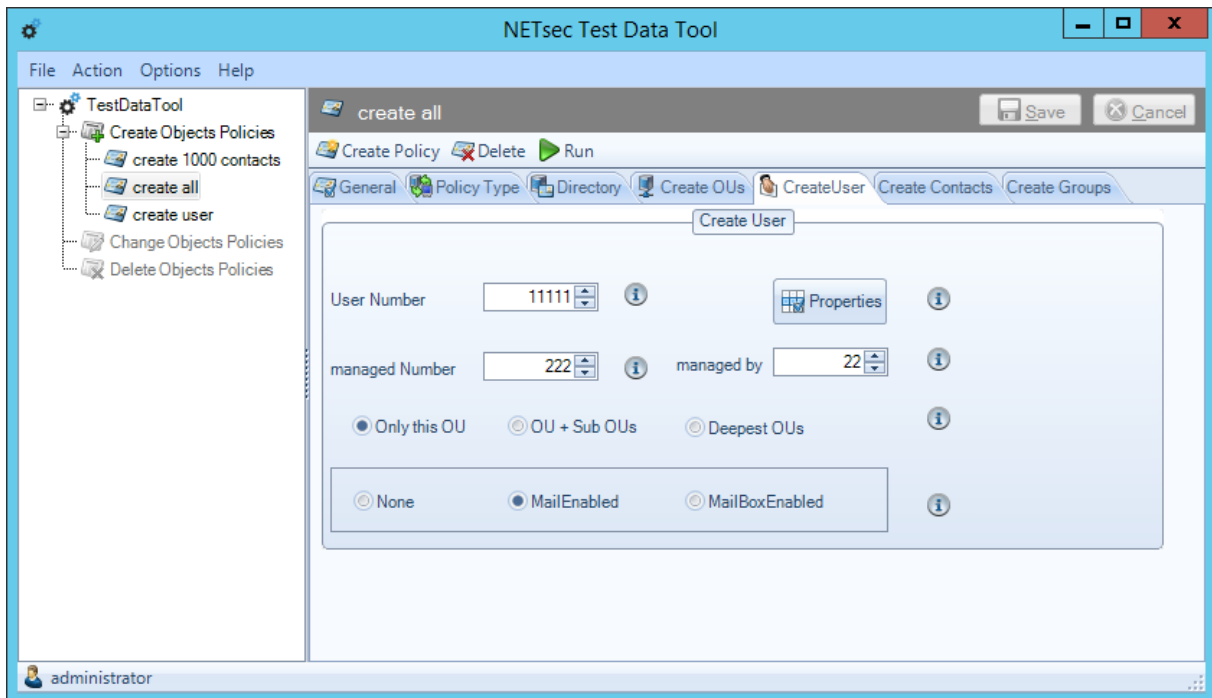
For the mail option of the creating contacts you can choose between "None" and "MailEnabled". If you select "MailEnabled", the corresponding attributes are filled in the AD object.

Further information on these and other settings at this tab can be found on the information tooltips.



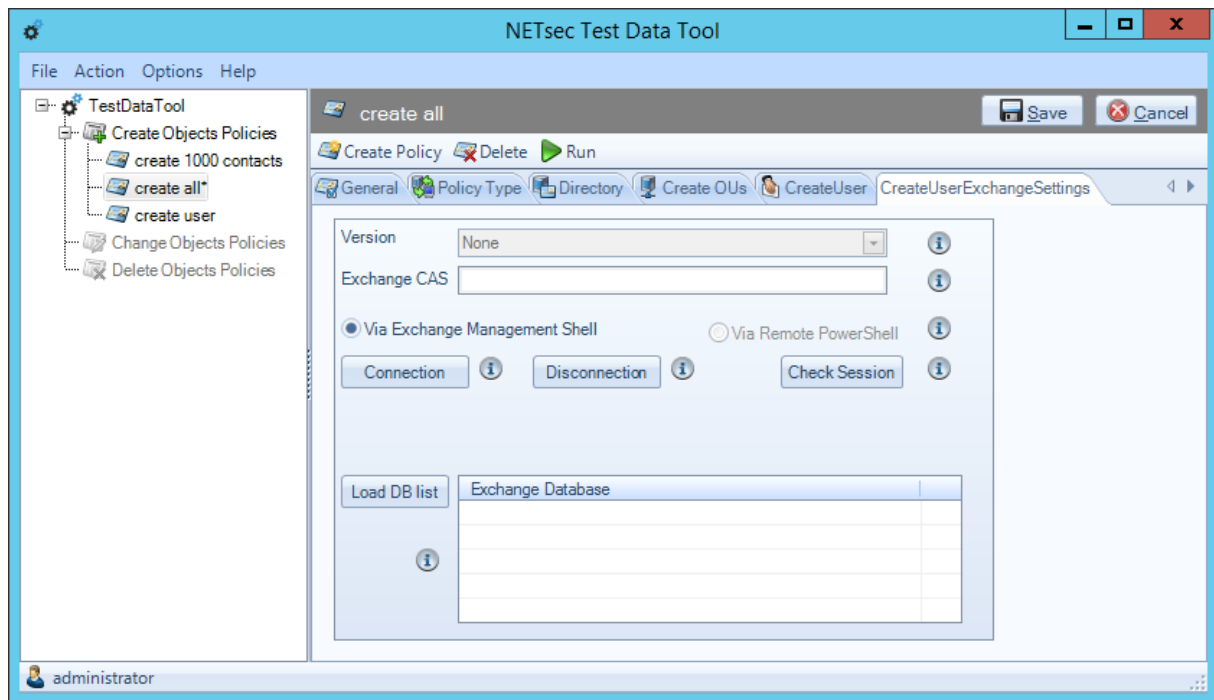
3.3 User, Mail Enabled User and Mailbox User

Similar to contacts you can create "User" and "MailEnabled User". Additionally you can choose to create mailboxes for the user objects.



If you switch on the "MailBoxEnabled" option, an additional tab appears, where you can test the connection and select the Exchange database to store the mailboxes.

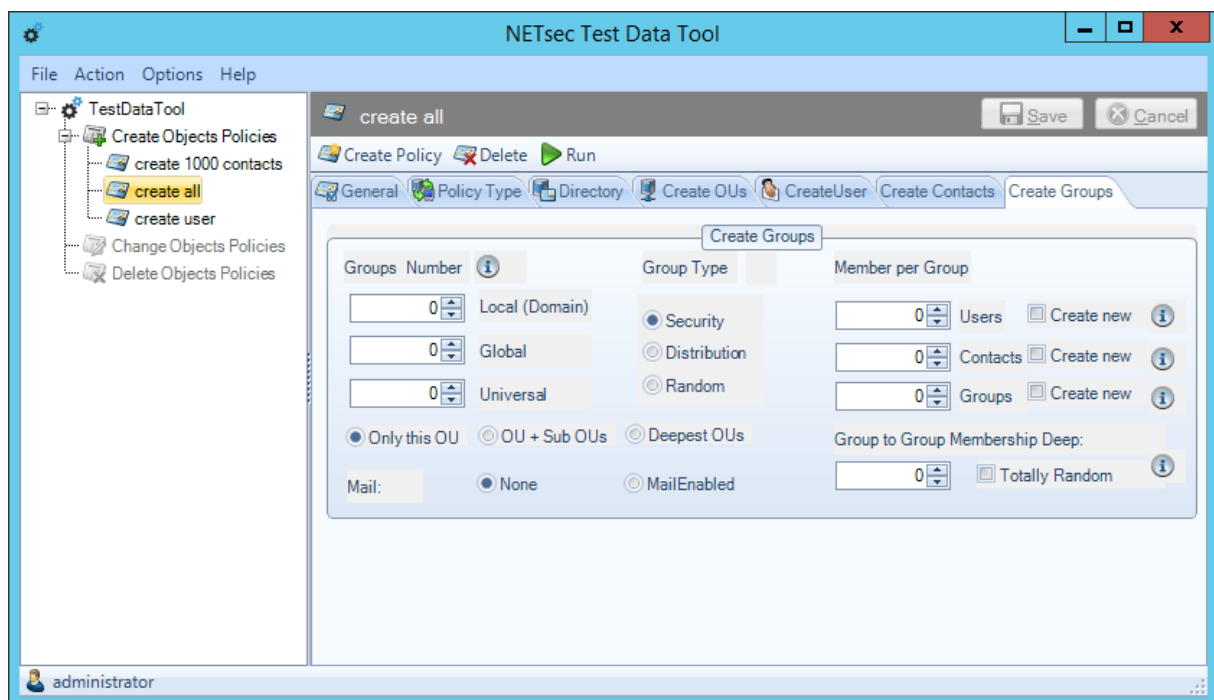
Note: To create mailboxes for user objects, the Test Data Tool must be installed either on the Exchange Server or on a machine, where Exchange Management Tools are installed on.



3.4 Groups and Mail Enabled Groups

Different group types can be chosen for creation. At this point you have again the choice to create mail enabled or not mail enabled groups.

Members can be optionally added to the groups. Here you can use existing objects or create new ones.

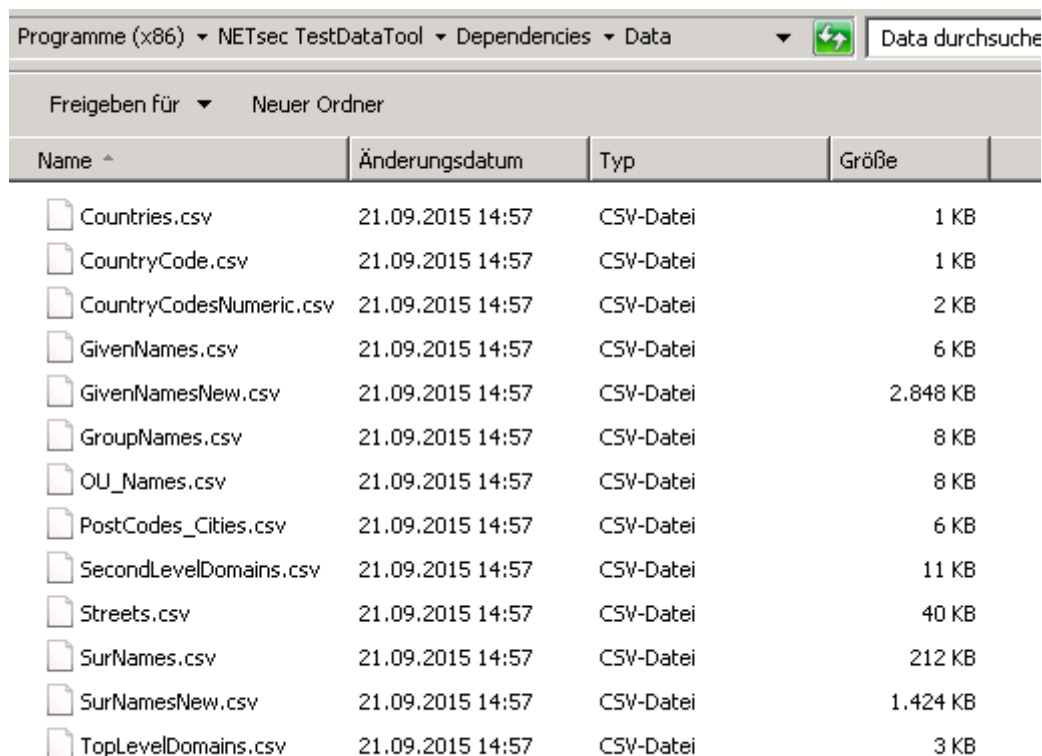


4 Behind the scenes

4.1 Random values

The tool combines values from lists which are placed in the program folder. You might edit the list and add or modify the default values. The test data are stored as CSV files in the installation program folder.

Note: The files Countries.csv, CountryCode.csv and CountryCodesNumeric.csv should not be changed. Errors in these files can cause the objects to be created not correctly.



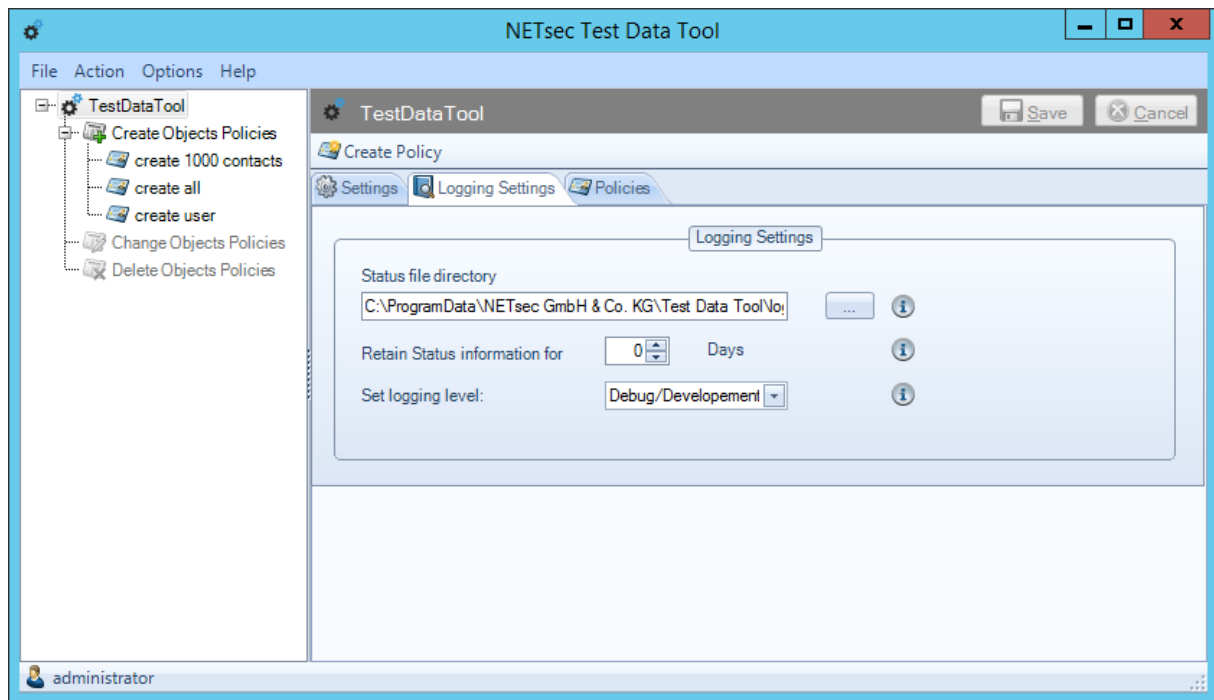
The screenshot shows a Windows Explorer window with the address bar set to 'Programme (x86) > NETsec TestDataTool > Dependencies > Data'. The search bar contains 'Data durchsuche'. The main area displays a list of CSV files with columns for Name, Änderungsdatum, Typ, and Größe.

| Name ^ | Änderungsdatum | Typ | Größe |
|-------------------------|------------------|-----------|----------|
| Countries.csv | 21.09.2015 14:57 | CSV-Datei | 1 KB |
| CountryCode.csv | 21.09.2015 14:57 | CSV-Datei | 1 KB |
| CountryCodesNumeric.csv | 21.09.2015 14:57 | CSV-Datei | 2 KB |
| GivenNames.csv | 21.09.2015 14:57 | CSV-Datei | 6 KB |
| GivenNamesNew.csv | 21.09.2015 14:57 | CSV-Datei | 2.848 KB |
| GroupNames.csv | 21.09.2015 14:57 | CSV-Datei | 8 KB |
| OU_Names.csv | 21.09.2015 14:57 | CSV-Datei | 8 KB |
| PostCodes_Cities.csv | 21.09.2015 14:57 | CSV-Datei | 6 KB |
| SecondLevelDomains.csv | 21.09.2015 14:57 | CSV-Datei | 11 KB |
| Streets.csv | 21.09.2015 14:57 | CSV-Datei | 40 KB |
| SurNames.csv | 21.09.2015 14:57 | CSV-Datei | 212 KB |
| SurNamesNew.csv | 21.09.2015 14:57 | CSV-Datei | 1.424 KB |
| TopLevelDomains.csv | 21.09.2015 14:57 | CSV-Datei | 3 KB |

4.2 Log files

The log files are saved by default under the folder "ProgramData". This path can be changed in the "Logging Settings" tab.

Additionally it can be determined how long the log files will be kept and how detailed they will be logged.



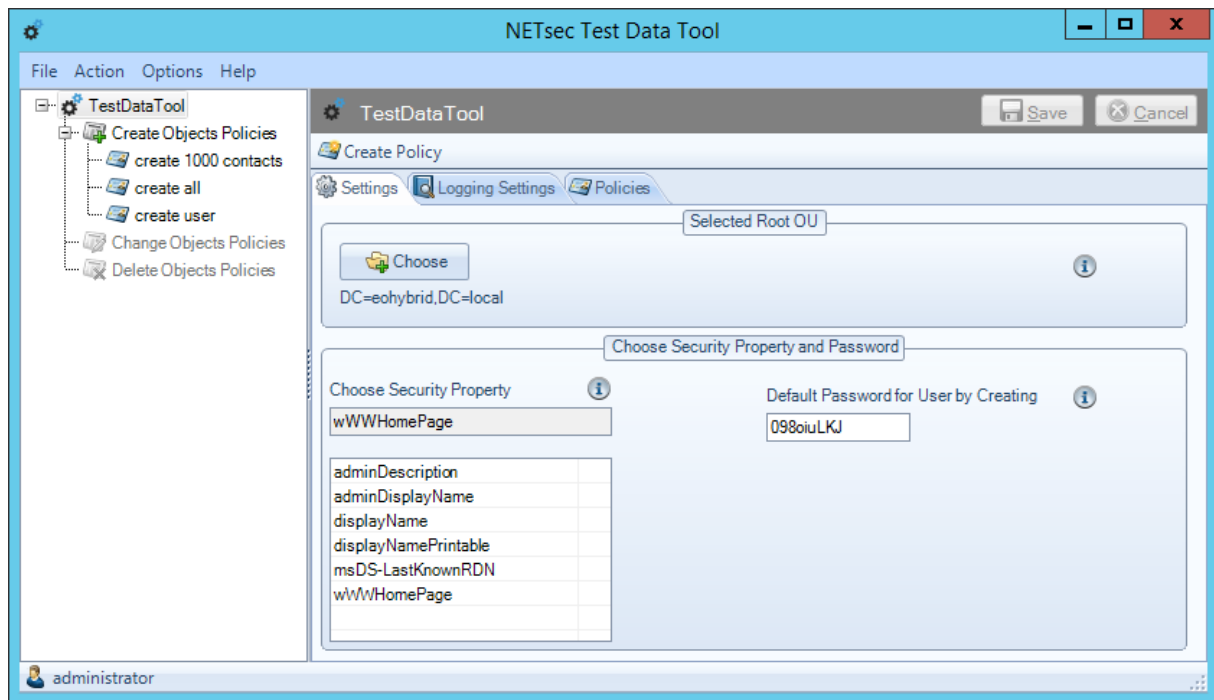
4.3 Settings

On the Settings tab General settings can be made.

You can select the root AD entry point for the program. This directory will be used later as the root for selection when creating a policy. This setting can help to protect you from the unintended selection of important OUs.

The password for the new user can be chosen and the "security property" can be selected. For further information to these settings, please refer to the information tooltips.

Note: It is recommended to start the "Test Data Tool" as administrator (with admin rights on the local machine) to avoid difficulties with accessing file paths.



5 Prerequisites

- You must have .Net Framework 4.0 or higher installed on the machine you want to use.
- The machine must be member of the domain.
- The tool was tested running under Windows 7, Windows 8.1, Windows 10, Windows Server 2008 R2, Windows Server 2012, Windows Server 2012 R2
- The tool was tested creating objects in an Exchange 2007sp1, 2010sp3, 2013 and 2016 environment.

6 Download

Download the tool from our website <http://www.netsec.de>

7 Support

By default, the tool is not supported. But if you experience any errors we are more than happy if you contact our support team. You will help making this freeware better.

8 Copyright & License

The tool is free of charge and Freeware.

You might use the tool in your own business environment. You are not allowed to distribute the file to other companies.

Nevertheless, we are happy if you announce the download-link to other people.

9 Comments and Feedback

If you want to leave a comment you are invited to make some notations at our blog <http://www.tools4Exchange.com>. Search for "Test Data Tool".