



GALsync® v4.3

System Requirements & Installation

NETSEC

16. April 2012

SYSTEM REQUIREMENTS & INSTALLATION	2
SYSTEM REQUIREMENTS.....	2
INSTALLATION	3
<i>Prerequisites</i>	3
<i>Required Permission</i>	3
<i>Details</i>	4
GALSYNC SERVICE WIZARD	5
Start Service / Stop Service	5
Change Credentials	5
Uninstall Service	5
UNINSTALL GALSYNC.....	6
GALSYNC IN LARGE ENVIRONMENTS.....	6
LICENSING	7

System Requirements & Installation

System Requirements

The table containing the supported Operating Systems and all required software for GALsync is shown below.

Even though you can install GALsync on a DC/GC or Exchange Servers we recommend you to install it on a member server within the domain (i.e. Dedicated GALsync server, file server, or backup server). The GALsync server must have a high bandwidth connection to the DC/GC.

For testing purposes you can also install GALsync on a client computer running Windows Vista or Windows 7.

Components	Required
OS	Windows 2003 Server (all versions) Windows 2003 R2 Server Windows 2008 Server Windows 2008 R2 Server Windows Vista Windows 7
Software	.NET Framework 2.0 or greater Mapi32 must be available, either <ul style="list-style-type: none">Microsoft Messaging API und Collaboration Data Objects 1.2.1 You have the option to install MAPI/CDO 1.2.1 directly with GALsync or install it afterwards with the ExchangeMapiCdo.msi in the GALsync subfolder Standalone MAPI. Note: You should reboot your computer after installing MAPI/CDO 1.2.1 or <ul style="list-style-type: none">Outlook A 32-Bit version of Outlook is required, because we do not support 64-Bit Outlook Note: Outlook must be configured so that the Standard Profile opens the GALsyncService account mailbox.

Installation

Prerequisites

- Create a service account with an Exchange Mailbox, which will run all policies from now on.
- Ensure that the mailbox of the service account is accessible (i.e. by Outlook Web Access).
- Ensure that the mailbox of the service account can send to and receive mails from the other organization.
- Ensure that incoming mails from the other organization do not get caught by your spam filter or firewall.

Required Permission

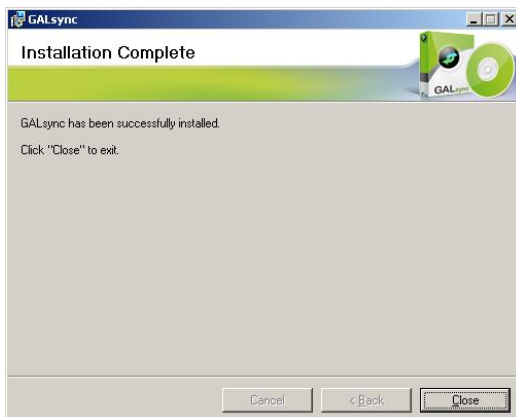
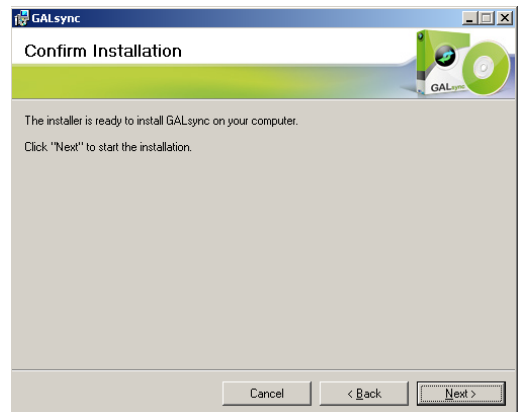
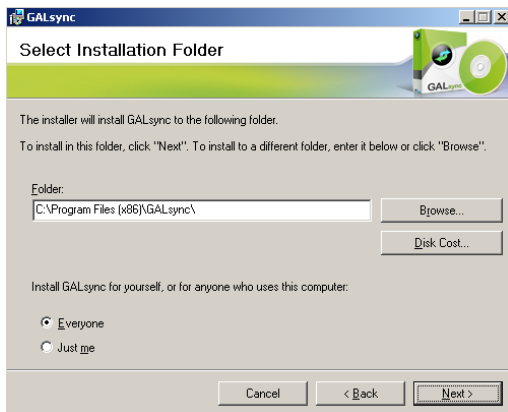
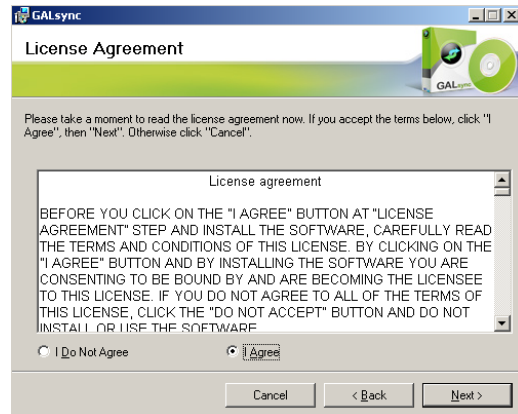
In order to install GALsync you need administrative permission. During setup you configure a service account to execute all policies in future.

- The service account must be from the domain containing the GALsync server.
- The service account cannot be hidden from Exchange address lists.
- Make sure that the service account is member of the local administrator group.
- Make sure that the service account has the local right to "run as a service ". This right is added to the service account during the installation, but your business policies could abstract the right "run as a service" from the service account.
- Make sure you can logon as the service account. It is possible that the user requires membership in the group Remote Desktop Users.
- Make sure that the service account has all permissions to insert and modify objects in your defined import-OUs.

Note: We strongly recommend logging on as the service account to run the GALsync GUI.

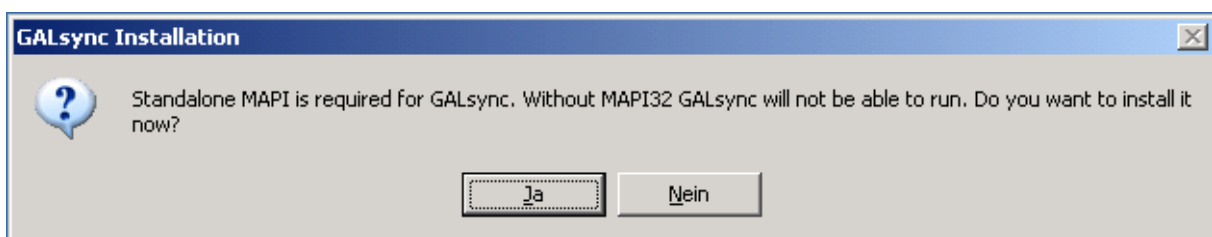
Important: If you configure the logon information for the service account in the GALsync GUI use always the format „**domain\username**“!

Details



If your computer has no MAPI functionality, you will be asked to install the ExchangeMapiCdoMSI after starting the GALsync software the first time.

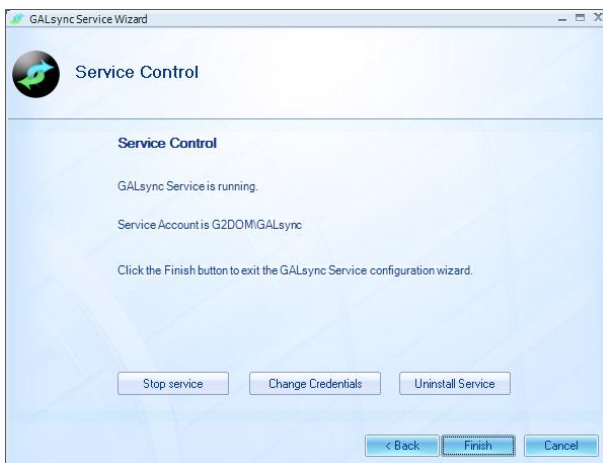
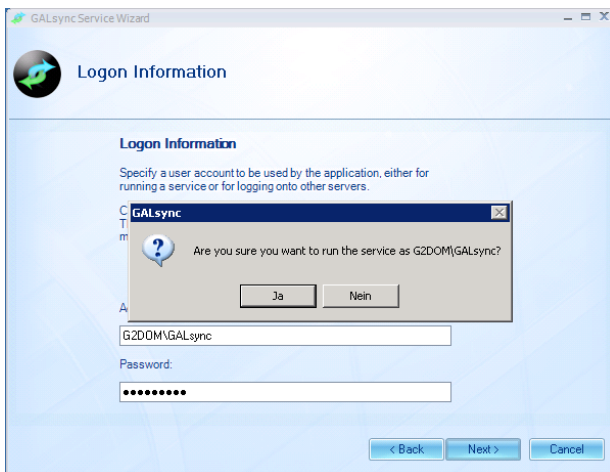
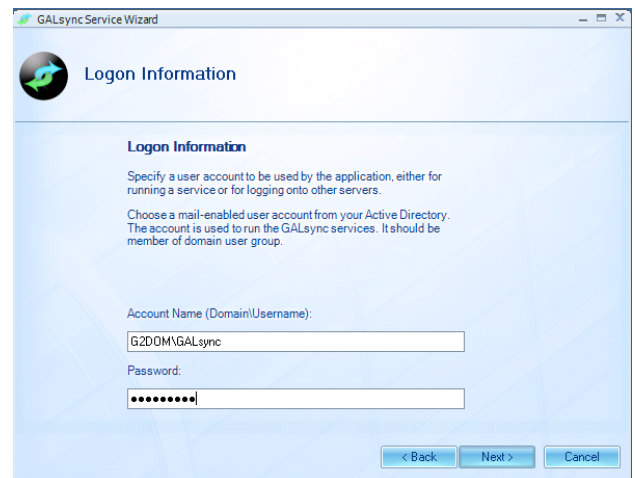
You find the installation files in folder "Standalone MAPI" of GALsync program folder.



Note: After installing MAPI32/CDO1.2.1 you will need to reboot the computer.

GALsync Service Wizard

Opening the software, the GALsync Service Wizard starts always if the service is not installed.



Note: Please make sure to when inserting logon information to the GALsync account use this format **“domain\username”** for the user name!

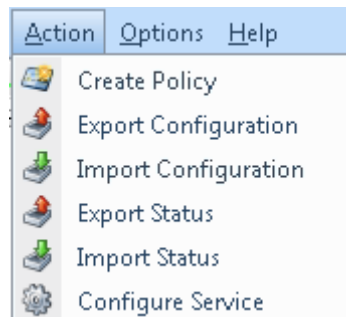
Start Service / Stop Service
Start or stop the GALsync Service.

Change Credentials
Change the user credentials of the service account.

Uninstall Service
Uninstall GALsync Service.

Uninstall GALsync

In the Menu *Action* -> *Configure Service* within GALsync you can remove the Schedule Service. Thereafter, you can uninstall GALsync via the Control Panel, without restarting the computer. Uninstalling does not remove configuration files, or the license.



GALsync in large environments

In Multi-Domain environments we recommend you to install GALsync in every domain where objects will be exported.

The synchronization of all mailboxes with Free/Busy information with more than 5000 users can take a long time.

For more effective Free/Busy synchronization in large amounts we recommend a separate policy for the mailboxes.

It is possible to run multiple instances of GALsync on different computers and set it to export fewer users per computer to speed up this process.

Licensing

For our supported customers the new version will be completely free of charge.

If you do not have a valid support contract, you can use your GALsync version, but the new version is only runnable as trial.

If you run version 4.3 without a license you will not be able to export more than 100 objects!

If you have any question or queries you can contact

GALsync Technical Support

on +49 2421 998 78 20.

Alternatively, you can email them at **support@netsec.de**.